



INVESTIGATION REPORT

OCTOBER 2007



FLANAGANS THE BORDER INN

TABLE OF CONTENTS

Location and Background Information	
Site details	3
Historical background	3
Timeline of the history of the Border Inn	5
Previous reports of paranormal activity	6
Historical events possibly connected with reported ghosts	6
Site appraisal	7
Site plan	8
Equipment	
Infrared laser thermometers and weather stations.....	9
Still and video cameras	9
Night vision equipment	9
Passive infrared detectors	9
Portable power packs	9
Infrared surveillance cameras	10
X-10 equipment	10
Environment monitoring equipment	10
DVR systems and computers	10
Customised equipment	10
Other equipment	10
The Investigation	
Introduction	11
Events noted during site orientation	11
Session 1	13
Session 2	15
Session 3	16
Session 4	20
Environment monitoring results	22
Conclusions and recommendations	
Rating System	23
Recommendations	23
Site Classification	23



Ghost Research International
www.ghostresearchinternational.com

© Copyright all rights reserved. No part of this report may be reproduced or transmitted in any form by any means, electronic or mechanical, including photocopying, recording, or otherwise, without the prior written permission of Ghost Research International. Dist No. W010.

LOCATION & BACKGROUND INFORMATION

SITE DETAILS

LOCATION: Flanagans - The Border Inn Hotel
139 Main Street,
Bacchus Marsh
37°40'33.9"S 144°26'14.48"E
Elevation: 104 metres

DATE/TIME: 10pm Wednesday October 31st
4am Thursday November 1st 2007

CONDITIONS: Moon: Rise 12:47am (1/10) Set 10.20am (1/11)
Disc Illum: 62.57%
Age: 20.9 days (Waning gibbous)
Sun: Set 6.51pm (31/10) Rise 5.16am (1/11)
Solar X-Rays: Normal Geomagnetic Field: Quiet
Temp (Mean Aug.): Min 3.4°C Max 15.9°C



HISTORICAL BACKGROUND

The Bacchus Marsh area was thought to be occupied by the Kurung aborigines until Europeans settled in the region. In 1836 Kenneth Scobie Clarke arrived from Van Dieman's Land bringing sheep to graze and upon his departure in 1838 a retired military officer, Captain William Henry Bacchus, was left the land between the Lerderderg and Werribee Rivers. In the early 1840's Captain Bacchus built "The Manor" and the town became known as Bacchus Marsh.

The Border Inn was built by John Pilmer in 1850 and then leased to James Watt who became the licensee on December 4th 1850. After the discovery of gold in 1851 James Watt and the owner of the Woolpack Inn, James Elijah Crook, started coach services to the Ballarat goldfields. These are credited as being the first coach services in Victoria. Both flourished and with regular overnight stops at their respective Bacchus Marsh Inns, so did the hotels. The traffic allowed Bacchus Marsh to develop and it quickly grew around the Border Inn which is generally accepted to be the first coach stop in Victoria.

The Cobb & Co. mail coaches stopped at the hotel to change the horses during their Melbourne to Ballarat service. At this time the Inn consisted of a large single storey building with two wings on each side. The western side also had another building used as a billiard room.

In 1863 John Pilmer added a second storey to the main building. The hotel was then sold to Edward Jones in 1866. The auction was held on August 8th and the hotel was already being referred to as Jones' Border Hotel, suggesting he may have been a licensee beforehand. This is reinforced by early records which show "Mssrs Watt, Bartholomew and Jones" as licensees.

At this time the ground floor was described as having a number of rooms including a cellar, hall, two parlours, commercial room, large dinner/meeting room, billiard room, bar, bedrooms and pantry. The first floor consisted of 7 bed rooms and a drawing/sitting room. At the rear of the hotel there was a kitchen, pantry, store, servants rooms and stables. The stables could house over 20 horses and had related rooms attached. The grounds included a half acre garden and spring water well.



*The Border Inn Hotel c.1860's
Courtesy Bacchus Marsh & Region Historical Society.*



*The Border Inn Hotel c.1870
Courtesy Flanagans Border Inn Hotel.*



*The Border Inn Hotel c.1880
Courtesy Flanagans Border Inn Hotel.*



*The Border Inn Hotel late 1930's
Courtesy Bacchus Marsh & Region Historical Society.*



*The Border Inn Hotel c.1950
Courtesy Flanagans Border Inn Hotel.*

The hotel remained in the Jones family for the next 73 years. Edward George Jones (1812-1879) married Anne Francis Cooke (1819-1870). It appears their only child, also Edward George Jones (1854-1901), took over the running of the hotel.

Edward George Jones married Harriet Sophia Vigor (1859-1952) in 1878 at Blackwood, Victoria. They had 7 children, Edward William (1879-1954), Frances Maud (b.1881), Thomas Frederick ("Frederick Thomas") (1883-1967), Herbert George (1886-1976), Claude Leslie (b.1888), Arthur Norman (1890-1891) and Cyril Colleton (1897-1985), all born in Bacchus Marsh. Arthur Norman died aged 1 at Bacchus Marsh on November 21st 1891.

When Edward Jones died in Brunswick in 1901, his wife Harriet Sophia Jones ran the hotel with her son Frederick Thomas Jones. In 1921 Harriet was listed as the hotels proprietor and in 1923 it is known that Cyril Coleton Jones, another son, ran the hotel and was still licensee in 1934. A Cyril Jones was also listed as a purchaser of the Blackwood Hotel around 1928.

By 1936 both wings had Tudor style second storey additions and a verandah between them on the main building. It is believed that Carlton and United Breweries purchased the hotel in 1939 and since then ownership has changed hands numerous times.



*The Border Inn Hotel c.1960
Courtesy Flanagans Border Inn Hotel.*

TIMELINE OF THE HISTORY OF THE BORDER INN

1836	Kenneth Scobie Clarke settled in the area.	
1838	Kenneth Clarke left the land to Captain Bacchus.	
1850	The Border Inn was built by John Pilmer. James Watt leased the hotel.	
1850 December 4th	James Watt was the first licensee.	
1851	Gold was discovered and a coach service started, bringing travellers bound for the goldfields to the Inn.	
1858 September 8th	South province elections were held for the colony of Victoria. The Border Inn served as the polling place for Bacchus Marsh.	
1863	John Pilmer added a second storey to the main building.	
1866	A London born man, Edward George Jones, purchased the hotel. He was married to Anne Francis and had a 12 year old son, also called Edward George.	
1871	Bacchus Marsh became a municipality.	
1878	The son of Edward Jones (also Edward George Jones) aged 24, married Harriet Sophia Vigor in Blackwood.	
1879	Edward George Jones (senior) died aged 67. It seems his only son took over running of the hotel.	
1883	Section added to the second storey.	
1891	Arthur Norman Jones, the sixth child of Edward and Harriet, died in Bacchus Marsh aged 1 year.	
1901	Edward Jones (junior) died in Brunswick. It seems his wife and 3rd child Frederick Thomas took over the running of the hotel.	
1910 December 31st	Constable Charles Jones and Senior Constable Johnston Barclay assaulted	
1911 January 4th	Constable Charles Jones, aged 49, died from injuries sustained.	
1911 September	A verandah was added on the second level facing Main Street.	
1913	The billiard room on the west side of the hotel was demolished and replaced with a lawn area.	
1913 June	The old dining room was demolished to make way for further additions to the 2nd level.	
1913 November	A tutor style 2nd storey addition was added to the western side of the hotel. The first floor contained four bedrooms and a bathroom, while the lower floor (previously the dining room) contained three bedrooms and a meeting room at the front.	
1921	Proprietor noted as Harriet Sophia Jones.	
c1928	Cyril Jones purchased the Blackwood hotel.	
1933 June	A fire demolished a two roomed residence of gardener James Webb at the rear of the Inn.	
1936	A further Tudor style section was added to the second storey on the eastern side.	
1939	Carlton and United Breweries purchased the hotel.	
1952	Harriet Sophia Jones died aged 93 at Bacchus Marsh	
1995	The hotel is assessed as being of state significance.	
2000	Burling Nominees Pty Ltd sold the hotel, more recent licensees include Cambridge Way Pty Ltd and Garabaldi Park Pty Ltd.	

The Border Inn Hotel 1898

Courtesy Bacchus Marsh & Region Historical Society.



The main bar

PREVIOUS REPORTS OF PARANORMAL ACTIVITY

There have been various reports from visitors and staff of occurrences at the site. The piano at the southern end of the lower level has been heard at times when nobody is near. It is also in this area a lady has apparently been “sensed” at times. In the adjacent bar area chairs have been found to have moved whilst no one was present. Noises have been reported around the hotel in areas where nobody was present and general unusual or uncomfortable feelings have been experienced in certain locations.

People with apparent psychic abilities have reported up to 15 spirits around the hotel.



Above: The piano and adjacent bar, both scenes of mysterious happenings.

HISTORICAL EVENTS POSSIBLY CONNECTED WITH REPORTED GHOSTS

In 1891 the sixth child of Edward and Harriet Jones, Arthur Norman died at one year of age. Although this occurred at Bacchus Marsh, it has not been confirmed that it was at the hotel.

On New Years Eve 1910 two policemen were attacked in front of the Border Inn. One of them, Constable Charles Jones, aged 49, died 4 days later. There were two men involved, however a jury could not decide which one committed the assault and so no conviction to the murder was recorded. It is said that the spattering of the constables blood remained on the side fence on western side of the Inn for years. The western section of the hotel originally had a billiard room which was demolished in 1913 making way for a garden area. It is believed the original fence was replaced at this time.



The western side of the hotel where two policeman were attacked in 1910, one dying of his injuries four days later.

SITE APPRAISAL

The site has seen many alterations and additions to the original structure. Virtually every area visible today has been rebuilt or altered at some stage throughout the hotels 157 year history.

The hotel has embraced the heritage of the site and various pieces of memorabilia adorn the walls of the lower level.



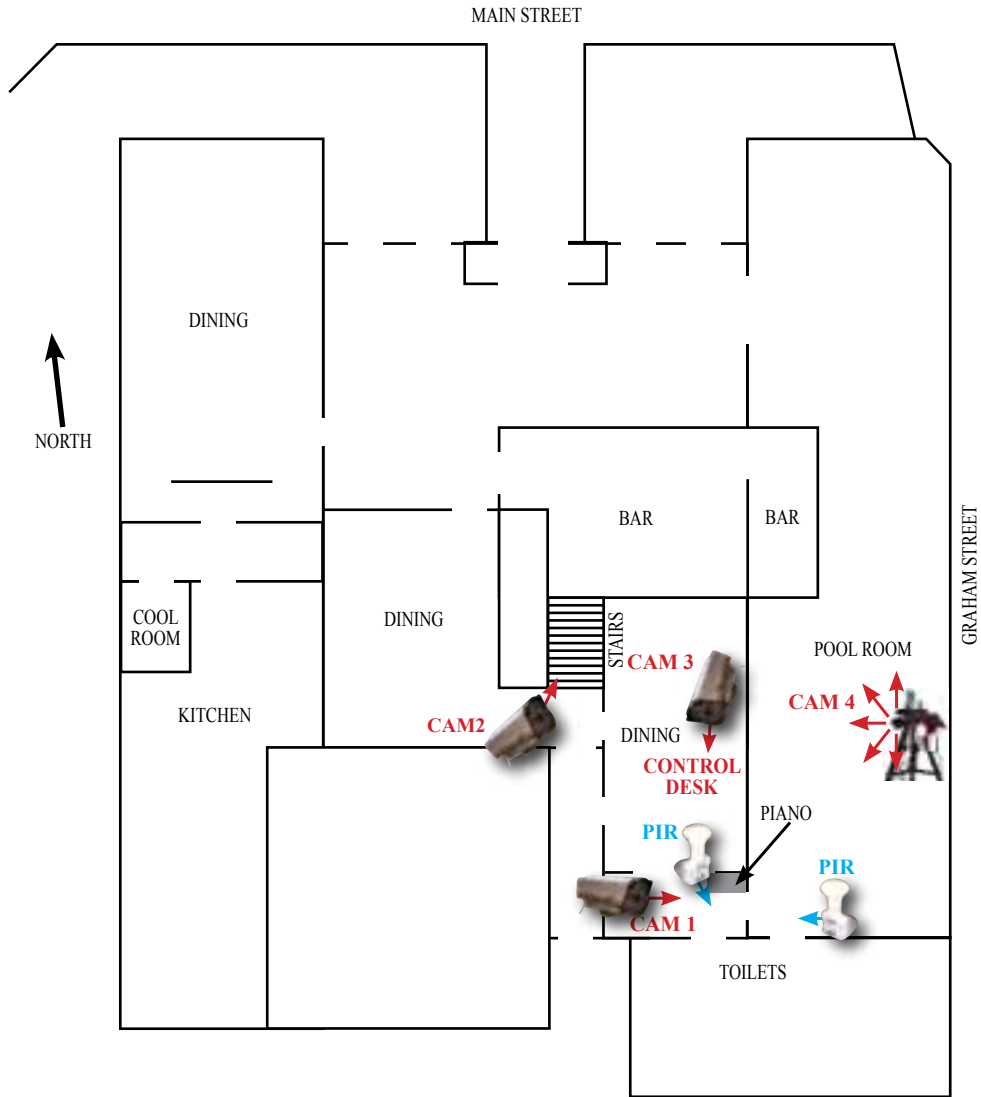
A main overhead power cable runs adjacent to the hotels eastern wall which could influence electromagnetic field readings. As with most hotels, the various cool rooms and refrigeration units which are usually left running continuously could also have an effect on readings. There are various reflective surfaces on the lower level and many areas are trimmed with metallic panelling on the walls. The buildings age and numerous renovations spread over its history would suggest that creaking boards and similar structurally orientated sounds are to be expected.

It is known that the Border Inn did have a spring well at the rear of the property at some stage, however no evidence that it still exists in any form could be found. The presence of any ground water at locations is noted as some believe it has connection to vibrational energies and may influence EMF and infrasound levels.



The hotel as viewed from the south eastern corner

Border Inn - Site Plan



DVR CAMERA LOCATIONS

Static DVR Camera positions with placement EMF and PIR detectors indicated.

Camera 4 was the remote camera recording in infrared, red and ultraviolet light.

Other EMF and PIR detectors were used in various locations.



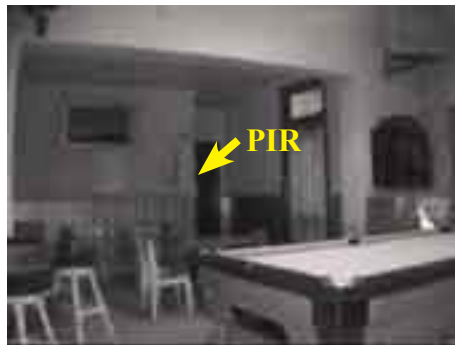
DVR Cam 1 - Piano



DVR Cam 2 - Stairs



DVR Cam 3 - Control Area



DVR Cam 4 - Remote Camera covering the pool room / bar area



EQUIPMENT

The team utilised various pieces of equipment during the investigation, some of which is described below.



INFRARED LASER THERMOMETERS & WEATHER STATIONS

Infrared laser thermometers are used to monitor temperature fluctuations. Portable weather stations may also be used to record temperature, humidity and barometric pressure. A visible beam green laser can be used to reveal moisture and dust particles in the air as well as determining angles for cameras.



EMF DETECTORS

Electro Magnetic Field detectors are used to detect changes in the electromagnetic field which some believe may indicate paranormal activity.



STILL AND VIDEO CAMERAS



A range of still and video cameras are used including the two items displayed here. The Finepix F30 camera (left) was voted the best low light compact camera in 2006 - capable of shooting at ISO3200 at 6.3 megapixels it can minimise the necessity for a flash. Camcorders with nightshot functions are also used and their abilities may be enhanced with the addition of infrared illuminators like the one at right.



NIGHT VISION EQUIPMENT

Night vision equipment such as monoculars, scopes, binoculars and goggles which incorporate light intensifying tubes and infrared illumination allow the observation of otherwise dark locations.

INFRARED ILLUMINATORS

Assorted infrared illuminators are used to enhance night vision devices such as night scopes, nightshot camcorders and IR surveillance cameras. The spotlight (at right) is a rechargeable 5,000,000 candle power spotlight modified so it can emit either normal or invisible infrared light.



PIR DETECTORS

Passive infrared detectors can be used in two ways - assisting to make a controlled location to ensure human interference can be detected or it can indicate movement where there's no reason for it.

PORTABLE POWER PACKS

Whilst it's always preferable to have mains power available when and where required, it doesn't always work that way.

The need for portable power is evident at most investigations and a range of 12 volt packs are often used, as well as 240 volt inverters providing mains power when it is otherwise not available.



INFRARED SURVEILLANCE CAMERAS



These are interfaced into the DVR system, with in built infrared light emitting diodes they send out infrared light to which the cameras are sensitive to, but is invisible to the human eye. Wired and wireless models are used dependent on site conditions.



X-10 EQUIPMENT

A range of X-10 equipment may be used to allow control of mains devices such as lights and appliances. The DVR computer also contains software that can also take control or monitor any X-10 enable devices including PIR detectors. Alternatively this can also be configured to allow control and monitoring from a remote location.



ENVIRONMENT MONITORING EQUIPMENT

A range of monitoring equipment may be used to accurately record environmental conditions such as temperature, humidity, dewpoint, barometric pressure, rainfall, wind speed, wind direction and altitude.

Data is collected from multiple points and relayed back to the control station where it is charted against time and monitored for any fluctuations. Some people believe there may be fluctuations in temperature and barometric pressure when paranormal activity is experienced.



DVR SYSTEMS & COMPUTERS

The central control computer used at investigations is designed to match the needs of a particular site. It often incorporates a Digital Video Recording Surveillance system. Multiple computers are available enabling simultaneous investigations to take place. The DVR systems can record up to 16 cameras continually for well over 24 hours, this is extended considerably if less cameras are used or any camera is placed in motion detection mode.

The computers also provide for transferring data from digital cameras and audio devices on site, controlling X-10 equipment, recording data from environmental sensors and logging reported events into the system. Once set up the system may be monitored or controlled remotely if an internet connection is available. This allows for the control of cameras, X-10 and environment monitoring equipment off site, as well as the broadcasting of all data to a remote location.



CUSTOMISED EQUIPMENT

We do specially construct or modify items to suit our requirements - at left is the remote unit which includes infrared camera, additional 48 LED infrared illuminator, ultra violet and red lights - all controlled via wireless remote. A single connection is all that's required to power the unit. The camera can pan through 300 degrees and the lights switched on or dimmed from the control desk. The ultra violet and red lights are for testing at the edges of the visible spectrum which some believe may provide a greater chance of capturing an image. Seances of old were often held in red lighting for this reason.

OTHER EQUIPMENT

A range of ancillary equipment is often used such as audio recording devices, UHF two way radios etc... along with lot's of batteries, cables and coffee as required!



THE INVESTIGATION

The team arrived for the investigation at 10pm on Wednesday October 31st 2007 with five members attending. A week night was considered more appropriate for the hotel and so the night of Halloween was chosen. Also present were Sue, who apparently has medium abilities, son Jesse and friend Ivan, the site owner John and employee "Rocket".

Most of the activity had been reported on the lower level in the south eastern corner so it was decided to concentrate heavily on this area. DVR cameras were set up with views of the eastern bar, the piano, the stairs and the control desk area. Environment monitoring sensors were placed at the control desk and the piano. Night vision camcorders, audio recorders, EMF meters, still cameras and additional temperature and humidity sensors were used throughout the site during the investigation.

Manual monitoring was marked for areas including the cellar, old licensee quarters upstairs and the northern dining area. A general walk around with Sue was planned in order to record any impressions she may receive.

Recording commenced on all DVR cameras at 11.04pm.

EVENTS NOTED DURING SITE ORIENTATION 10.00PM-11.00PM

During the initial walk around and set up EMF base level readings showed readings averaging between 2 and 5 milliGauss, with some areas indicating from 5-10mG. These were mainly confined to the lower level which also contained various refrigeration units and ancillary appliances associated with any hotel.

Electro Magnetic Field emissions exist all around us and we are exposed to it at varying levels. The earth itself, animals and humans all have an inherent magnetic field - humans emit EMF at around .2mG. When electrical power exists in any device it also emits EMF although it's level is often reduced by adequate insulation.

There is considerable concern for continued exposure of high levels of EMF and the effects it can have on humans. It is believed that an alarm clock giving off high EMF next to a bed can contribute to such things as nightmares, feelings of sadness, nausea and sensing a presence. The work of professor Michael Persinger in Canada has shown that such feelings can be induced in the laboratory by exposure to controlled EMF emissions. In the extreme there are various medical concerns for continued prolonged exposure to high levels of EMF, hence the general cautions given for controlling exposure to CRT screens, TVs, Wireless Access Points, transmission towers and mobile phones. Accepted levels for prolonged exposure are considered to be around 3mG.

EMF exists at various frequencies and most meters are calibrated for use at around 50-60Hz, which is the standard frequency for household power. This enables them to accurately access the EMF levels of household appliances. Frequency ranges include:

Sub-Extremely Low Frequency (SELF): 0 HZ- 3 Hz - Includes natural DC sources - animals/earth

Extremely Low Frequency (ELF): 3 Hz - 3000 Hz - Includes AC Power Sources

Very Low Frequency (VLF): 3 - 30 kHz - Includes computer monitors, CRTs.

EMF is of interest to paranormal investigator in two ways. Firstly, base line readings present in an area under investigation may indicate a higher level than average. While not of a supernatural origin such a level could be contributing to reports of strange feelings such as a "presence" or feelings of being watched or sudden sadness.

Once such thoughts are triggered in the brain, it is quiet natural for mind to try and analyse what it is experiencing. It can then look for more information in order to determine an explanation and all the senses become heightened. The eyes may search in the dark, the ears listen for any hint of sound and the senses of smell and touch similarly go into "search mode". Any additional information received is added and the effect can snowball until an answer is found. A muscle twitch at this stage may be perceived as a something "touching" and then the mind may proceed further, recognising this as something very strange and it may

subconsciously connect it to “ghosts”. Once this is done it is like sitting in a dark room after watching a spooky movie ... your perceptions are “in tune” to interpreting the environment in a certain way when normally it would not be of any concern. Such powers of suggestion and perception are of interest to paranormal investigators, it can be said that the witness has indeed had an experience which is very real, but it may be something quiet natural. The importance of supportive hard data becomes self evident.

The other way EMF is of interest to paranormal investigators is when the level of EMF suddenly changes without apparent reason. Most naturally occurring EMF is relatively constant over a period of time and sudden increases or decreases in the EMF level should certainly demand investigation. Anything that animates in any way is under the influence of some kind of energy. As previously discussed many objects, including humans, do this by using electrical energy. It is theorised that ghosts may effect the ambient magnetic field as to exist and animate they must utilise some form of energy. Some believe they may draw on surrounding energy sources in order to animate in any way. Monitoring the EMF is important for this reason and any spikes should be carefully examined for possible natural causes such as air conditioning or refrigerators turning on and off.



The hotels north-eastern side showing overhead mains power cable, street light and an underground power run, any of which could be contributing to the site's ambient EMF.

It is suggested that base levels of EMF at the Border Inn could be contributing to some of the reported events. In moving around with various EMF meters there was a wide range of levels indicated. Some areas displayed no reaction while others only a short distance away gave full scale deflections, these readings were repeatable and provided an idea of the sites ambient EMF levels. As the readings were widespread it was difficult to ascertain the exact cause but were most likely caused by such things as refrigeration units, older, less shielded electrical wiring or nearby high tension wires. It was not feasible to turn appliances off, or cut the power to the hotel completely, which would assist in identifying specific causes.

Because of the levels of ambient EMF, the best use for the EMF meters was to leave them in a static position where they could indicate any fluctuations.

To assist in interpreting results from the various meters used, a brief description and features specific to them is provided below.



The Ghost Meter

Reads from 0-5 milliGauss and indicates fields above 2mG by sound and flashing light. It detects fields in the frequency of 50-1000 Hz (ELF).



CellSensor

The CellSensor detects RF Radiation in two scales (0-1 and 0-10 mW/cm²) and EMF in the ELF range in two scales (0-5 “high sensitivity” and 0-50mG “normal sensitivity”). The remote probe with a 3ft cord must be used in order for EMF to be detected, otherwise it only detects RF Radiation (eg. from cellular phones).



K-II Meter

The K-II indicates EMF levels from 0 to 20+mG in both the ELF range (50 to 1,000Hz) & VLF range (1,000 to 20,000Hz). It uses 5 LED's to indicate levels of “Normal” 0-1.5 mG, “Low” 1.5-2.5 mG, “Caution” 2.5-10 mG, “High” 10-20 mG and “Warning” 20+ mG. Its response is very quick and it has an accuracy of $\pm 5\%$ at 50-60Hz.

SESSION 1 - 23.00-00.00

23:00 Walk around with Sue

A walk around was conducted with guest Sue who gave her impressions of the site. Whilst we do not rely on information supplied by mediums without it being confirmed by other means, we thought it would be interesting to record their perceptions and compare it to any currently known data.

Sue stated she sensed:

A male about 23 years old with headache and chest pains from about 1997. Downstairs in toilet area. Increased EMF levels were detected around Sue whilst passing on this information.

A thin male aged 26 at the stairs, upset after finding his girlfriend cheating circa 1987.

A previous resident who died of a heart attack near the north west corner of the upper level.

A child named James wearing clothing similar to “knickerbockers”, aged 4-5 years, who was the son of an owner or live in manager.

A female named Emily or Emilia with a connection to piano.

The information cannot be firmly connected to what is presently known about past residents and staff, the current status is inconclusive until further information can be found. Difficulty does exist in obtaining data from records in more recent years due to issues of privacy.

23:08:03 PIR Movement Indicated - Piano

The passive infrared detector placed on top of the piano activated, indicating movement in the area.

Passive infrared detectors detect changes in temperature of the area being monitored, they do not emit any energy to do this but monitor the levels of infrared radiation for any change. While not triggered they are monitoring the temperature of surrounding surfaces in the area. Should someone enter the area the change in temperature triggers the device. Should someone try to trick the device by shielding themselves with an item cooler than the surrounding area, the device will still detect a change and trigger. Only when the shield is the exact temperature of the surface behind, will a change not be detected. Care should be taken in placement of the detectors so they do not sense changes in thermal radiation caused by ovens, hot water pipes or any item which may be subject to temperature change. Glass tends to filter thermal radiation so movement through a window or in a mirror is unlikely to be detected.

This was the first of 19 indications given by this particular sensor located near the piano which cannot be attributed to anyone nearby. 18 of these were during the first session. At various times the PIR was angled differently but still continued to detect movement.

During session 1 the environment sensor located behind the PIR on the piano showed that the ambient temperature only varied by .3°C, averaging 21.9°C. The EMF detector visible in the DVR frame showed no spikes above the ambient level (approximately 2.5mG) during the PIR detections.

23:12:10 “Orb type anomaly” - DVR Camera 4 - Pool Room

Orb type objects were recorded on a few occasions in the area of the pool room. In comparison to other sites, relatively few orbs were noticed in the hotel, either on DVR footage or still camera photographs.

Orbs are anomalies which can appear quite often on still photographs and video cameras. Most can be put down to out of focus moisture, dust or insects caught inside the camera’s focal point and illuminated by the



Sue on a walk around of the upper level.



The first of many detections of movement indicated by the PIR at the piano

camera's flash. Others can be attributed to reflections from nearby lights. Some believe that "true orbs" are balls of energy of ghostly origin, possibly the form taken when a spirit is moving around or about to manifest. To be considered as a ball of energy it would be necessary to establish that the object is giving off it's own light rather than reflecting it and ideally any movement should have independent and possibly intelligent type features. During our investigations possible orbs are noted but without any collaborating data or unusual features displayed they are generally rated as "inconclusive" at best.

The orb at right appeared on a single frame and although at least one other anomaly experienced can be attributed to the infrared light from DVR Camera 1 visible through the window, it is not believed to have contributed to this particular image.



"Orb type object" seen on footage from the DVR camera located in the pool room.

23:25 "Blast of air" - Cellar

During the first session three of the team members spent some time in the cellar, possibly one of the oldest areas of the hotel.

EMF readings were higher with continued indications of around 2-5+mG. Moving around various areas of the cellar saw readings indicated where previously there were none. Because numerous items of hotel equipment (including pumps and refrigeration units) were switching off and on in the cellar area, EMF results were considered inconclusive.

At one point one of the team experienced a definite blast of air to back of the neck and across the ear. It was concentrated and comparable to someone blowing or a burst from an air hose. Upon examination there were no air hoses found within proximity which could cause such a concentrated blast of air.



The cellar, with a team member examining the area just after the "blast of air" was experienced.

23:42:19 PIR Movement Indicated - Piano

At different times throughout the first session the PIR was moved to different positions and angles, as well as additional senses added, to try and narrow down the exact trigger area as well as rule out interference.

23:44:37 PIR Movement Indicated - Piano

At one point there were two PIR detectors, roughly at 90 degrees to each other, both indicating movement, whilst interference was also evident on the cabled camera (DVR Camera 1). The PIR sensor was moved to the keyboard of the piano before the first session ended.

Below: Two different moments of PIR movement detection at the piano. The frame capture (below right) shows a second PIR detector also activating and simultaneous camera interference.



23:52:30 EMF Spikes - Pool Room

At 11.52pm an EMF detector was placed in a static position on a pool table in a position where an ambient level was around 1mG. This meter then began showing spasmodic spikes above 2mG at irregular intervals. Minutes of inactivity would be followed by spikes well above the 2mG tripping level.

These spikes occurred at varying levels into the next session and at times when everybody was on the opposite side of the hotel.



EMF meter in the pool room indicating in increase in the level of EMF.

SESSION 2 - 00.00-01.00

00:13:22 “Orb like object” - Piano

DVR Camera 1 located at the piano captured an orb like object moving from the centre of the door to the left and off screen.



Sequence of frames from DVR Camera 1 showing movement of a light anomaly near the piano.

There are a few interesting characteristics exhibited by this anomaly including the fact that it lasts for 6 seconds, moves upward, changes direction, increases in size, and appears three dimensional by giving a brighter edge on one side.

Comparing images of confirmed out of focus bugs and dust from this particular camera it must be said this one does appear different. There was no indication from the PIR detector suggesting it was either too small to be detected, was moving too slow, was not actually in the area of detection, or was of a temperature equal to the surroundings.

Unfortunately the EMF meter is at an angle which doesn't allow accurate determination of any increase in the EMF. There also does not appear to be any change in the light level on the highly reflective surface of the piano itself, suggesting either the object was not as close to the piano as it may seem or it is not producing it's own light.

There doesn't appear to be anything unusual around this time on footage from a DVR camera located on the other side of the door, or from another DVR camera covering the area to the left of screen.

00:42:29 PIR Movement Indicated - Piano

The passive infrared sensor again indicated movement near the piano. This was the first unexplained movement registered since the time the sensor was moved to the piano's keyboard near the end of the first session. It was also the last PIR movement detection near the piano recorded on the night.

During session 2 the "Ghost Meter" EMF detector on the pool table continued to show spasmodic readings. When a CellSensor meter was placed there in high sensitivity mode it triggered virtually continually. When switched to normal sensitivity (0-50mG) and moved slightly it settled down somewhat.



Detection of movement indicated by the PIR at the piano.

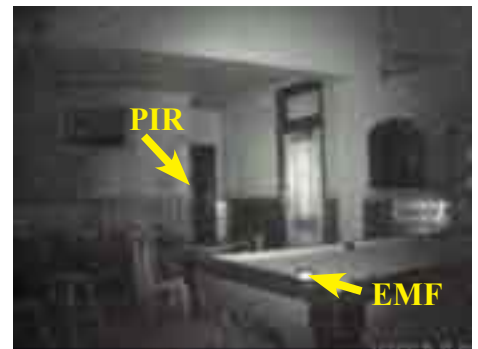
SESSION 3 - 01:00-02:00

01:09:17 "Light anomaly" DVR Camera 4 - Pool Room

A light anomaly appeared to the left of camera 4 in the pool room just before a team member entered to place a PIR sensor on the pool table. This was present for just over 10 seconds, 4 of which the team member was in the room and did not report anything unusual. The anomaly, which seems to move slightly, suddenly disappeared completely over 2 consecutive frames.

An EMF detector positioned on the pool table at the time did not trigger and a PIR sensor on the side wall facing in the opposite direction gave no indication.

Although this was the first time this anomaly appeared, it was not the last and it will be looked at further later in the text.



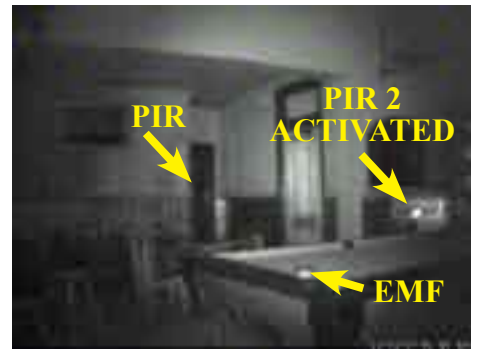
A sequence of frame captures from the pool room approximately 2 seconds apart showing an anomaly to the left of screen.

01:10:48 PIR Movement Indicated - Pool Room

A passive infrared movement detector placed on the pool table and facing at down at about 30° from horizontal indicated movement whilst no one was present. This was the only PIR indication in that area during the night.

Another PIR sensor placed further back and at 90° from this sensor's detection area did not indicate any movement.

An EMF meter placed on the pool table also gave no indication.



01:13:12 Interference noted on camera 4 - Pool room

The wireless camera (DVR camera 4) located in the pool room experienced considerable interference on 4 occasions over a period of 84 seconds, each lasting only a few frames. Interference to this extent was not noted on this particular camera on any other occasion during the evening.



Interference noted on the DVR camera 4 in the pool room over a period of about 1 1/2 minutes.

01:14:50 "Light anomaly" DVR Camera 4 - Pool Room

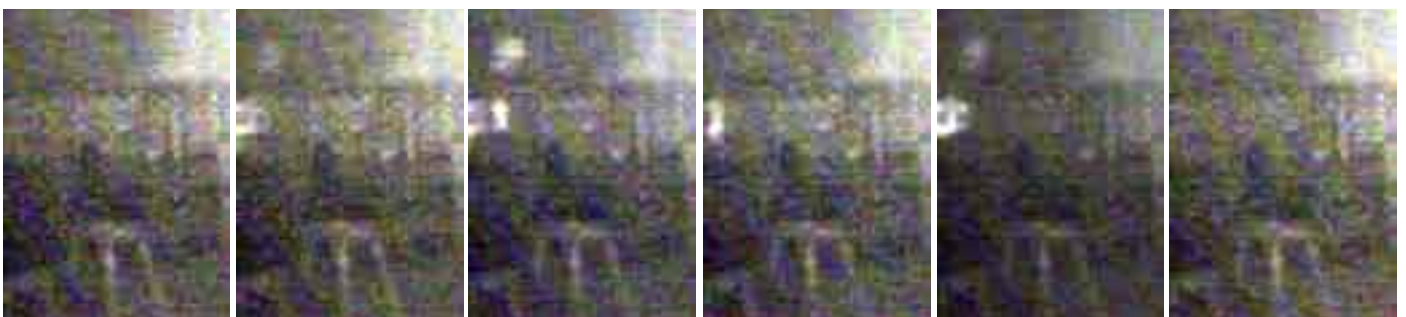
A light anomaly similar to one which appeared at 1:09 am was recorded in the pool room. This was the second and final time such an anomaly occurred.

Although video footage available on the website does give a better indication, a series of frame captures reproduced here does show definite movement of the anomaly.

The event lasted 12 seconds during which time there were no people present and no indications from PIR or EMF sensors nearby. Unfortunately it occurred some distance away and to the left of the main infrared illumination of the camera shooting in total darkness.



Views of the anomaly - Above, full frame and below a heavily brightened sequence showing movement.





Above: A sequence of 12 full frame captures from the pool room DVR camera.

01:17 “Breeze” and scratching sounds - Cellar

Following the events reported in the cellar during the first session, 3 team members performed a vigil there during the third session. At 1:17 one of the team reported a “breeze” followed by scratching sounds, the source of which could not be ascertained.

01:23 Three team members report physical events - Cellar

Whilst one team member recorded proceedings in the cellar on a night vision camcorder, the other two experienced simultaneous events involving physical movement. The first had a digital camera hanging from her wrist freeing her hands in order to hold a torch and EMF meter. Suddenly she felt as if someone was pulling on the camera. The camera does appear to move suddenly on camcorder footage taken at the time.

A second team member some distance away simultaneously reported being touched on the back. Review of the camcorder footage (available on the website) showed both members reacting to what they were experiencing at the exact same time, quiet independently and before communicating with each other. Moments later the third member who was operating the camcorder reacted quite strongly to a feeling of being kicked in the shin.



Above: A sequence of 9 frames from the night vision camcorder in the cellar showing two team members' simultaneous reactions to events. The insets shows movement of the 2nd team members camera hanging vertically from a wrist strap which appears to flip to a horizontal position and back again.

01:40 "Red Orb" - Front dining area

As stated there were very few "orbs" captured on camera in comparison to other sites. One unusual one showed up on a photograph taken in the front dining area at the north west corner of the hotel.

As previously discussed, there are many possible causes of orbs and to eliminate them all, considerable supportive data is required. Some, like this one, are considered unusual but more information would be required in order to ascertain an exact cause. For this reason, as is common with orb photographs, the event is considered "inconclusive".

An EMF meter located on a nearby table did not indicate a change in the electromagnetic field when this photograph was taken. However three spikes above 2mG were reported a few minutes later when an indication of any presence was requested.



Right: "Red orb" photographed in the front dining area.

SESSION 4 - 02:00-03:00

02:27:52

EMF Readings near piano

Numerous EMF spikes were recorded on the K-II meter approaching 10mG which were above the ambient level of about 2.5mG. The K-II which is particularly responsive was in a static position in view of the DVR camera. Another EMF meter located about 4 metres away did not trigger - it was positioned in a corner where the ambient level was below 2mG and required a reading above this to trigger.



Above & Right: Various EMF readings near the piano.

02:46:26 EMF Readings near piano

Spikes from 2.5mG to 10mG continued to be recorded on the K-II, with some in the range 10-20mG. At 2.46am the other EMF also began indicating increases, which it did on six occasions over the next three minutes. There was no indication of movement in the area from the PIR.



02:53:27 “Orb” object near piano

A few team members set up for an experiment at piano. This involved a ring being suspended on a chain and acting as a pendulum to indicate responses to questions. Such séance like experiments are conducted to evaluate techniques being employed by those interested in the paranormal. Whilst we do not rely on any data obtained without it being confirmed by other means, the experiments are monitored for any increase in activity and to ascertain the effect on the participants.

At one point an orb appeared on the DVR camera which travelled from the right and vanished when it reached a position near the “pendulum”. The footage of a nearby night vision camcorder was checked and the anomaly does not appear. This indicates the anomaly was most likely an object such as a dust particle or bug passing close by the DVR camera, out of focus and inside the camera’s focal point. Had the object been a “ball of energy” giving off it’s own light from a position further away from the camera, it would have appeared on both pieces of footage. It seems mere coincidence that in the last frame the “orb” appears it is positioned over the chain of the “pendulum”.



Above and Left: An “orb type object” on the DVR camera and a frame capture of the scene on a night vision camcorder.

The absence of the a similar anomaly on the camcorder footage suggests it was most likely an airborne particle or bug passing close to the DVR camera.

02:56 Possible EVP near piano

At one point during the experiment an audible “Yes” was heard on two audio sources, apparently in response to a question asked. Upon review it does exhibit tonal qualities different to the voices of the team members present, however it cannot be ruled out as someone’s half mumbled reading of the ring movement. Sometimes in speaking very softly the vocal chords can work differently (similar to a young male who’s voice is breaking, only a lot softer) this can cause a voice which sounds considerably different. In situations like the experiment being conducted it is necessary to ensure that participants speak “loud and clear” to avoid the possibility of confusion. The event is classified as “inconclusive”.

03:00 am Pack Up

Pack up was commenced at 3am and monitoring ceased completely at 3:27am. No further events were reported and the team left the site at 4:00am.

The team would like to thank the site owner, John, for allowing us the opportunity to investigate the hotel and both John and “Rocket” for their hospitality on the evening. The participation of Sue, Jesse and Ivan, who had left the hotel earlier in the night, was also appreciated.



ENVIRONMENT MONITORING RESULTS

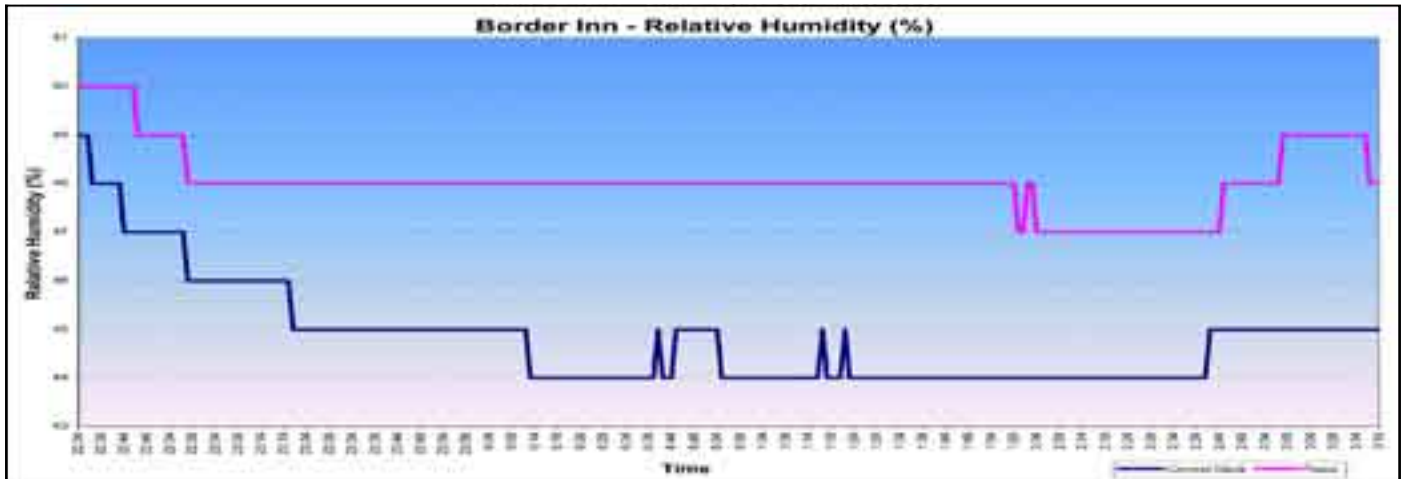
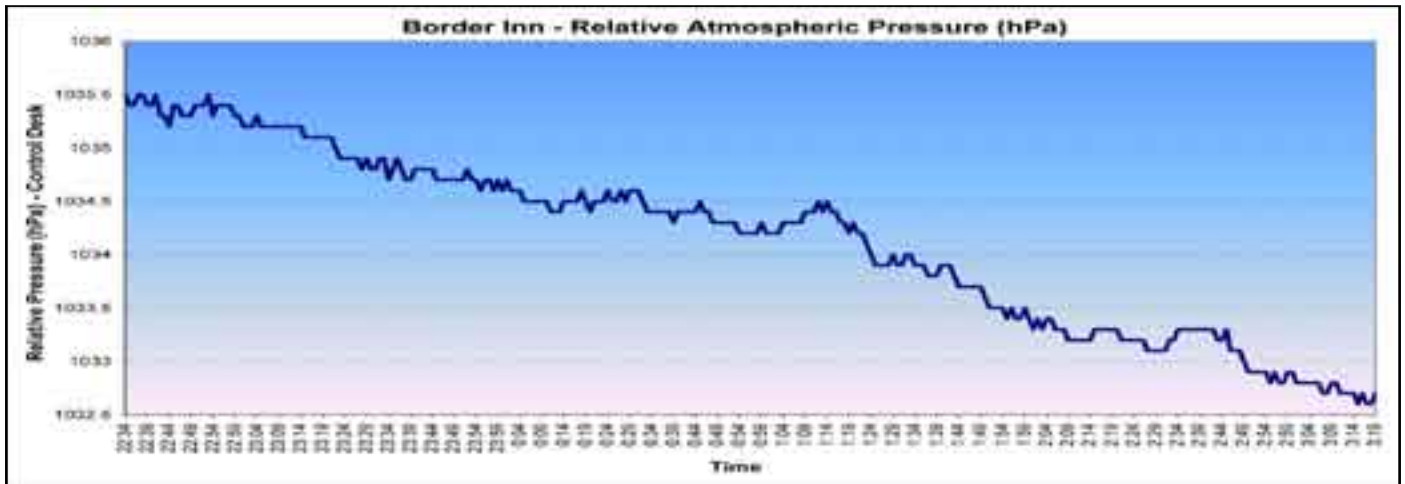
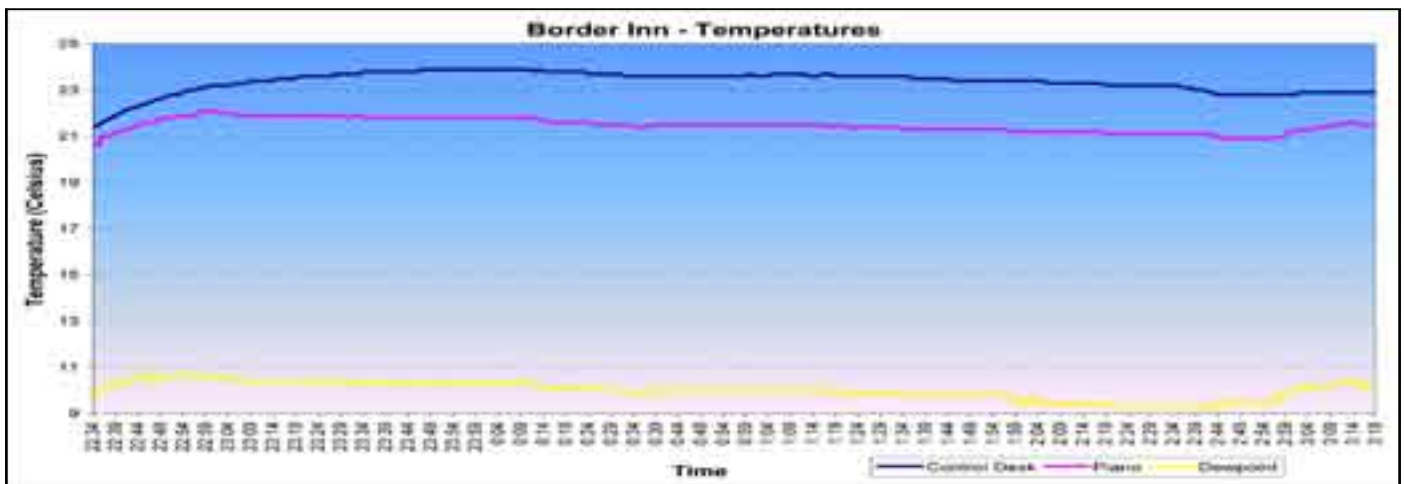
The environment monitoring equipment recorded no abnormal changes in temperature, relative humidity or atmospheric pressure during the investigation.

There was never a change exceeding more than .4°C from 1 minute to the next, likewise atmospheric pressure never changed by more than .2 hpa and relative humidity by more than 1%.

The atmospheric pressure maximum was 1035.5 hpa, minimum 1032.6 hpa and averaged 1034.1 hpa. Total variance was over the whole night was 2.9 hpa.

At the control desk maximums were temperature 23.9°C, humidity 49%. Minimums were 21.4°C and humidity 44%. Averages 23.4°C and 44.8% humidity. Total variance 2.5°C and 5% humidity.

At the piano maximums were 22.1°C and 50% humidity, minimums 20.6°C and 47% humidity. Averages were 21.5°C and 48% humidity. Total variance was 1.5°C and 3% humidity. Dew point maximum was 10.7°C, minimum 9.2°C, average 10°C and variance 1.5°C.



CONCLUSIONS AND RECOMMENDATIONS

RATING SYSTEM

To assess reported events a rating system is adopted that is weighted towards the skeptical viewpoint. There is no assumption made that ghosts exist. This ensures the highest rating is achieved only when all natural explanations have been eliminated. This may cause some events which may be paranormal in origin to be discarded because they *could* be caused by something natural. This viewpoint is preferred because to claim that an event is caused by something not currently widely accepted as fact, demands considerable hard evidence be provided to support the claim.

The classifications used are as follows:

Explained	All characteristics of an event can be fully satisfied by natural explanations which the evidence indicates is the actual cause.
Natural explanation highly likely	A natural explanation cannot be ruled out and remains highly likely.
Inconclusive	No conclusion can be reached due to a lack of data to enable further analysis.
Indication of possible activity	Likely natural causes have been eliminated and there remains characteristics considered unusual but a lack of more supportive data prevents a higher rating.
Evidence of activity	Solid evidence and supportive data exists that documents an event which defies all natural explanations.

It is rare to be in the “right place at the right time” together with the required equipment that allows all of the necessary data to be available. For this reason most events fall within the second, third or fourth classifications. The Border Inn investigation was no exception and many reported events were rated as inconclusive.

A few reported events and in some instances, the sequence of their occurrence, do display “indications of possible activity”. These include some of the EMF spikes and PIR sensor activations experienced as well as four of the team members experiencing some form of physical occurrence which could not be readily explained. The lack of supportive data does not allow a higher rating but does suggest further research at the site would be worthwhile.

RECOMMENDATIONS

Further investigation of the Border Inn is recommended as there were areas which could not be covered fully on the night. It is suggested that a log of any unusual experiences be kept recording the times and locations, to enable any pattern to be established and to suggest areas to be concentrated on any future investigation.

The ambient level of EMF should be examined further to establish causes. Ideally this would involve minimising power at the site which may not be possible. Such ambient EMF may be contributing to some reported events (as previously discussed). EMF fluctuations were interesting and this should be scrutinised further during any future investigation.

Given the number of PIR movement detections, especially in the area of the piano, the use of a thermal imaging camera on future investigations at the site could prove highly beneficial.

SITE CLASSIFICATION

The highest rating any reported event obtained during post investigation review was “*indications of possible activity*”. This therefore is the highest site classification that can be given at this stage. Further investigations would need to be conducted to alter this classification.